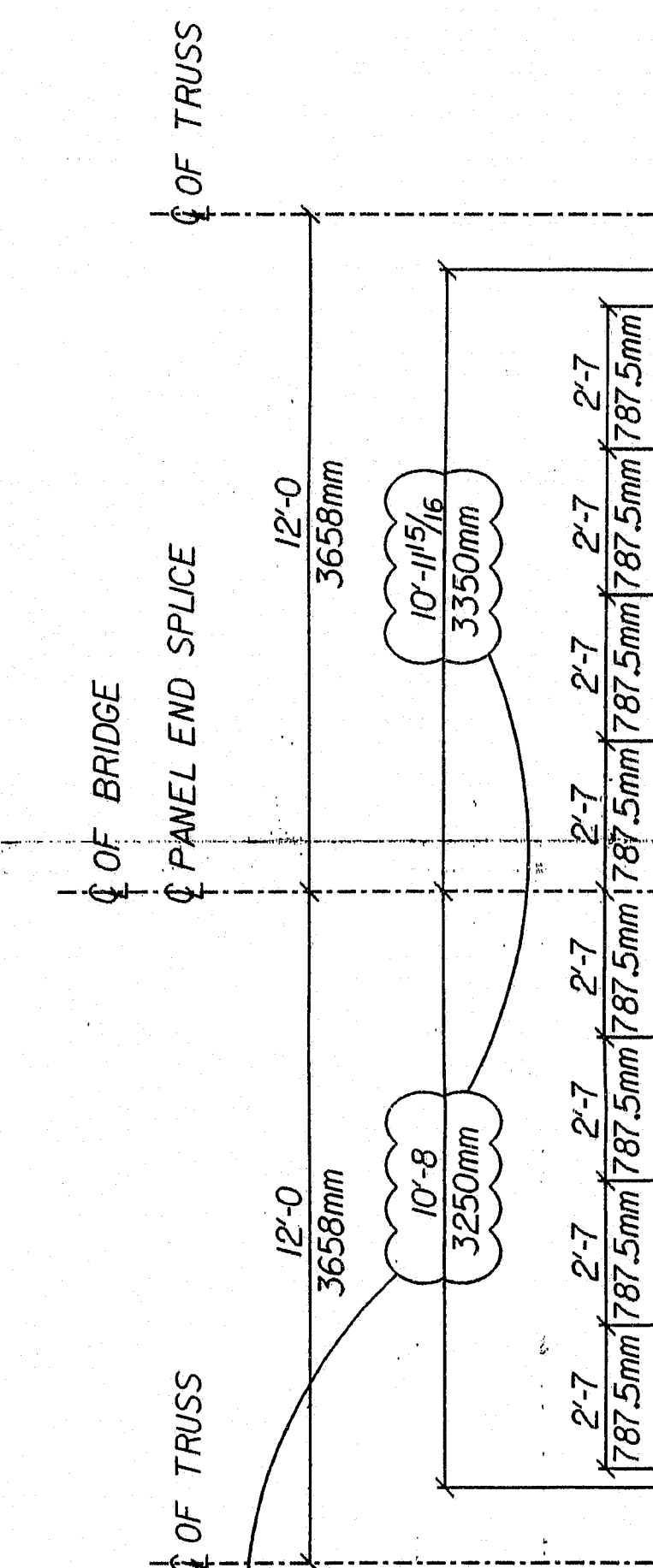




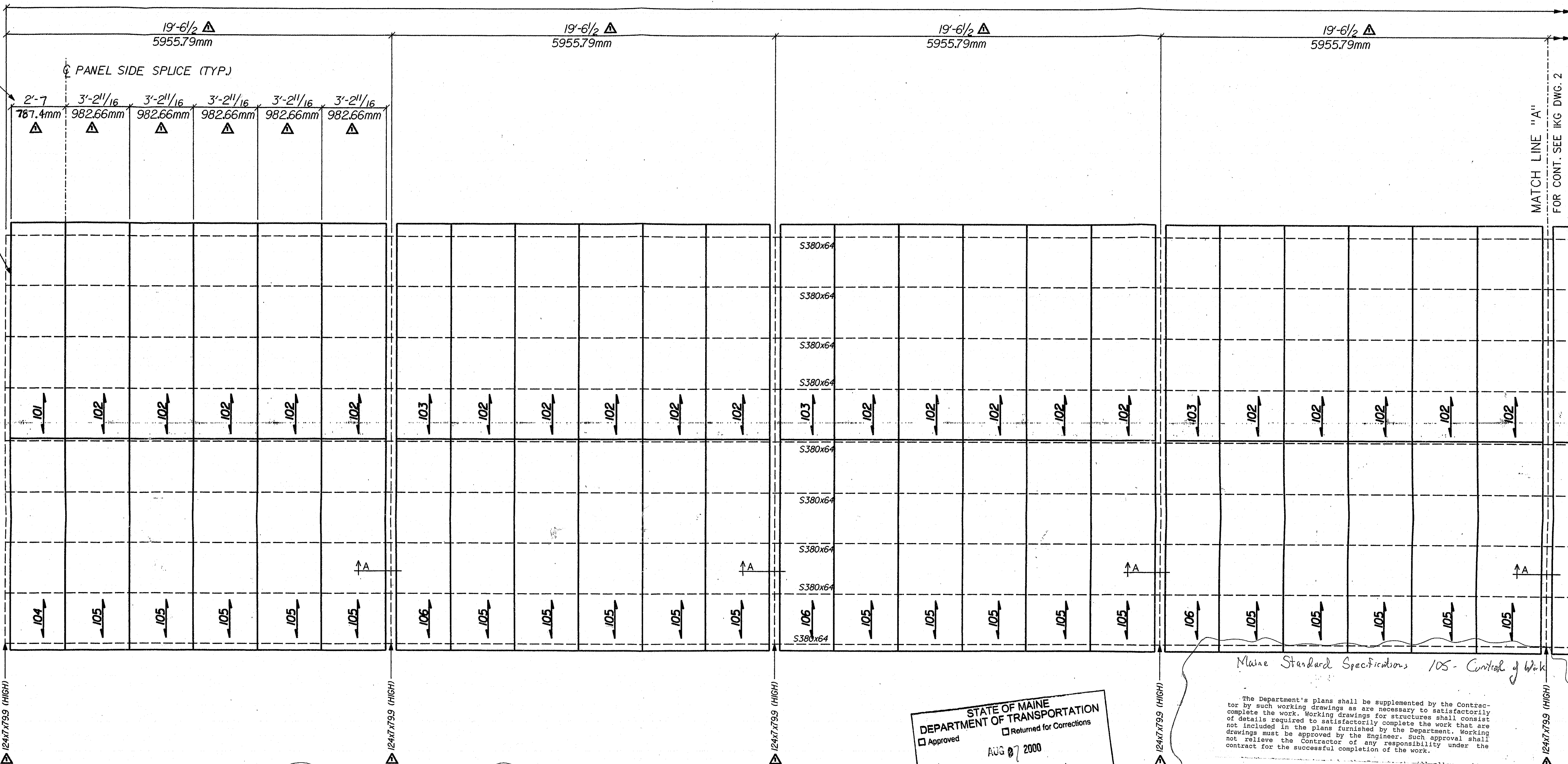
TYPICAL PANEL LAYOUT FOR THE SOUTH LEAF.

LEAVE CRIMP BAR HERE FOR FIELD CUTTING & SEAL WELDING TO FINGER JOINT.



FINGER JOINT NOT BY IKG.

VERIFY FINISHED GRATING LENGTH.



SPECIAL PROVISION SECTION 504 (Riveted Grid Decking)

The panel layout shall be developed by the fabricator and detailed on the shop drawings. Dimension tolerances shall conform to the Bridge Grid Flooring Manufacturers Association current standards. Lifting locations and procedure shall be included on the shop drawing submission.

Madawaska 7623.00 January 6, 2000

PARTIAL PLAN OF THE SOUTH LEAF REF. SHTS. 4 & 5 OF 7

STATE OF MAINE DEPARTMENT OF TRANSPORTATION
Approved AUG 7 2000
Approved as noted William Doukas, P.E.

Maine Standard Specifications 105 - Control of Work

The Department's plans shall be supplemented by the Contractor by such working drawings as are necessary to satisfactorily complete the work. Working drawings for structures shall consist of details required to satisfactorily complete the work that are not included in the plans furnished by the Department. Working drawings must be approved by the Engineer. Such approval shall not relieve the Contractor of any responsibility under the contract for the successful completion of the work.

Approval of the Contractor's working drawings relates to the requirements for strength and detail and such approval will not relieve the Contractor from responsibility for errors in dimensions, for successful completion of the project, or for responsibility for damage claims as defined in Subsection 107.15. The Contractor shall be responsible for the correctness of his plans and for shop fits and field connections, although the plans may have been approved.

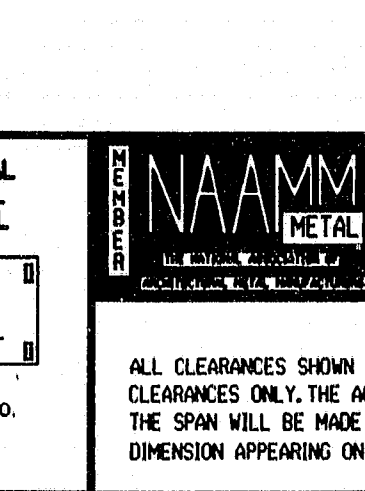
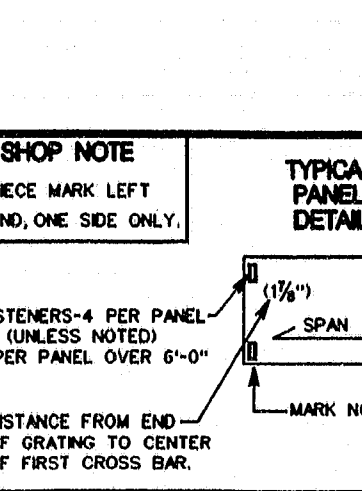
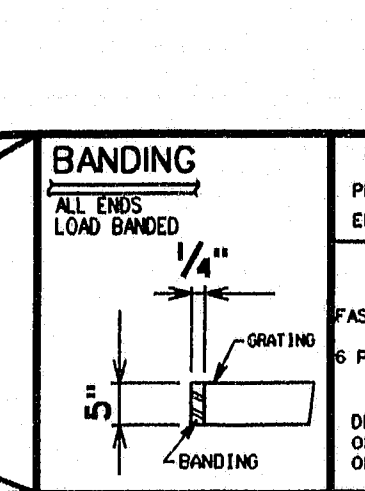
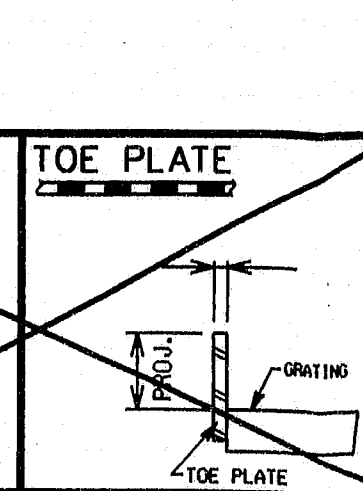
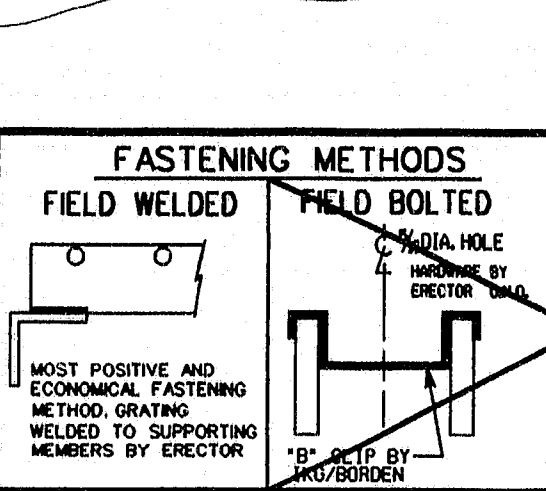
- NOTES: 1. ALL ENDS TO BE LOAD BANDED.
2. SEE DRAWING 7 FOR DETAILS AND SECTIONS.
3. MDOT PROJECT NO. BR-7623(100)E
4. STEEL TO BE ASTM A709M GR 345.

REV	DATE	APPR	LAYOUT	ERECT	SHOP
1	5/14/00	*			
2	7/27/00	*			

DESCRIPTION	BY
SUBMIT FOR APPROVAL	RW
REV. & RESUBMITTED FOR APPROVAL	RW

GRATING TYPE	RW-22A (5"x1/4" BEARING BARS W/ 1/2"x3/8" CRIMP BARS) STEEL
FASTENER TYPE	WELDED TO STRUCTURE
FINISH	GALVANIZED ASTM A123

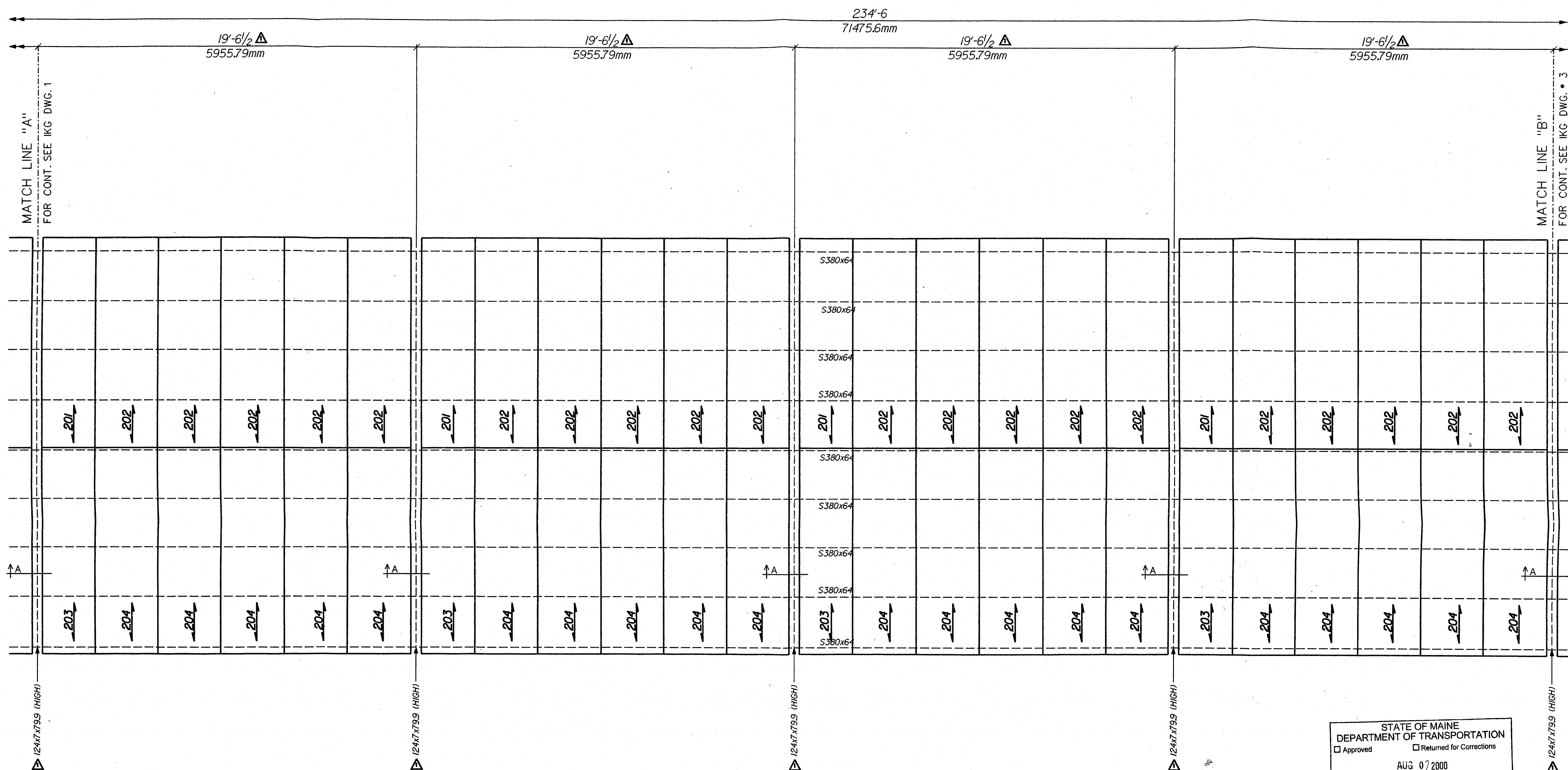
GRATING PCS	TREADS	FASTENERS
-------------	--------	-----------



Specifications, fabrication and tolerances in accord with NAAMM Metal Bar grating Manual unless otherwise noted.

STRUCTURE: INTERNATIONAL BRIDGE OVER THE ST. JOHN RIVER BRIDGE NO. 2399
LOCATION: MADAWASKA, ME
CUSTOMER: REED & REED, INC.
CUSTOMER P.O. NO. TO FOLLOW
DETAIL OF GRATING:

BACKCHARGES FOR FIELD WORK OF ANY KIND ARE NOT ACCEPTABLE WITHOUT PRIOR WRITTEN AUTHORIZATION BY IKG/BORDEN.
HARSOCO INDUSTRIES
A DIVISION OF HARSOCO CORPORATION
P.O. BOX 549 HWY. 25 & DUNN AVENUE RD. LEES, N.J. 08540
DET. BY: RW DATE: 6/14/00 CONT. NO.: H-080081
CHKD. BY: ME DATE: 6/14/00 DWG. NO.: 1



STATE OF MAINE
DEPARTMENT OF TRANSPORTATION
☐ Approved ☐ Returned for Corrections
AUG 07 2000
☒ Approved as noted ☐ Rejected
William Doukas, P.E.

PARTIAL PLAN OF THE SOUTH LEAF
REF. SHTS. 4 & 5 OF 7

FOR APPROVAL

APPROVER PLEASE NOTE
ANY VERIFY NOTES NOT
RESPONDED TO ON RETURNED
POINTS WILL BE TAKEN AS APPROVED

NOTES: 1. ALL ENDS TO BE LOAD BANDED.
2. SEE DRAWING 7 FOR DETAILS AND SECTIONS.
3. MDOT PROJECT NO. BR-76231001E
4. STEEL TO BE ASTM A709M GR 345.

BACKCHARGES FOR FIELD WORK OF ANY KIND
* ARE NOT ACCEPTABLE WITHOUT PRIOR WRITTEN
AUTHORIZATION BY IKG/BORDEN.

123-343





IKE INDUSTRIES

A DIVISION OF **HARSCO CORPORATION**

P.O. BOX 549
HWY. 25 & DUNNAVANT RD.
LEEDS, AL 35094

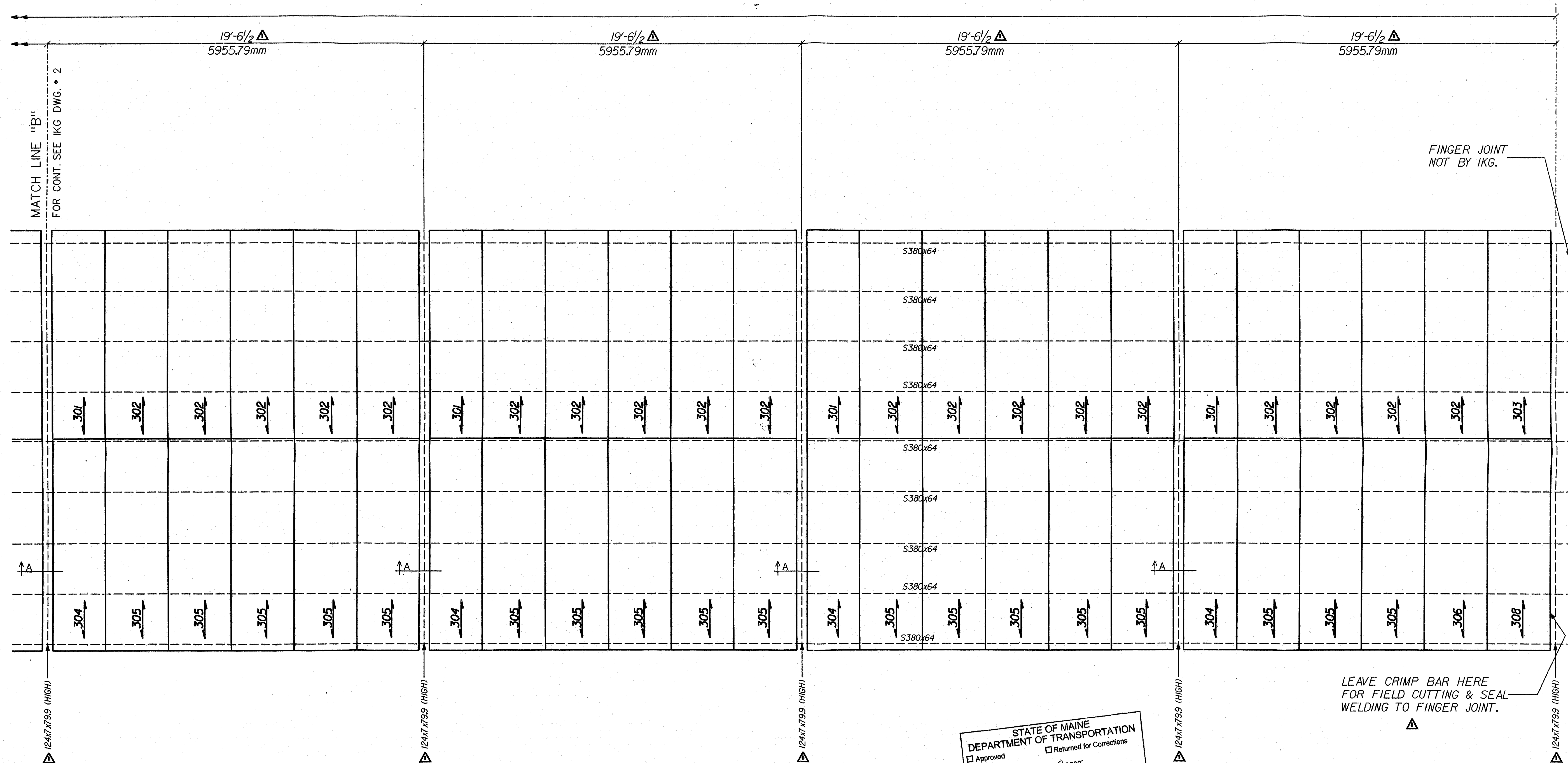
PH: (205) 699-2111
FAX: (205) 699-6200

DET. BY	RW	DATE 6/14/00	CONT. NO.	H-080081
CHKD. BY	ME	DATE 6/14/00	DWG. NO.	2

<div style="display: flex; justify-content: space-between;"> <div> DRAWING TYPE NONE </div> <div> PRINTS WILL BE TAKEN AS ANY NOTED </div> </div>									
REV.	DATE	APPR.	LAYOUT	ERECT	SHOP	DESCRIPTION	BY		
1	6/14/00	#				SUBMIT FOR APPROVAL	RW		
2	7/21/00	#				REV. & RESUBMITTED FOR APPROVAL	RW		
<div style="display: flex;"> <div style="flex: 1;"> GRATING TYPE RW-22A (5"x1/4" BEARING BARS W/ 1/2"x3/8" CRIMP BARS) STEEL FASTENER TYPE: WELDED TO STRUCTURE FINISH: GALVANIZED ASTM A123 </div> <div style="flex: 1;"> GRT'G PCS TREADS FASTENERS </div> </div>									
<div style="display: flex;"> <div style="flex: 1;"> FASTENING METHODS FIELD WELDED  </div> <div style="flex: 1;"> TOE PLATE  </div> <div style="flex: 1;"> BANDING  </div> <div style="flex: 1;"> SHOP NOTE PRICE MARK LEFT END, ONE SIDE ONLY. FASTENERS: 4 PER PANEL UNLESS NOTED 6 PER PANEL OVER 5'-0" DISTANCE FROM END OF GRATING TO CENTER OF FIRST CROSS-BANDING </div> <div style="flex: 1;"> TYPICAL PANEL DETAIL  </div> </div>									
<div style="display: flex;"> <div style="flex: 1;"> NAAMM Specifications, fabrication and tolerances in accordance with NAAMM Metal Bar Grating Manual unless otherwise noted. </div> <div style="flex: 1;"> STRUCTURE INTERNATIONAL BRIDGE OVER THE ST. JOHN RIVER BRIDGE NO. 2399 MADAWASKA, ME CUSTOMER REED & REED, INC. CUSTOMER P.O. NO. TO FOLLOW DETAIL OF GRATING </div> </div>									
<div style="display: flex;"> <div style="flex: 1;"> ALL CLEARANCES SHOWN AND INDICATED ON DRAWINGS ARE NOMINAL CLEARANCES ONLY. THE ACTUAL CUTOUT DIMENSION PERPENDICULAR TO THE SPAN WILL BE MADE TO THE NEXT BEARING BAR PAST THE NOMINAL DIMENSION APPEARING ON THE DRAWING. </div> <div style="flex: 1;"> REED & REED, INC. P.O. BOX 540 HWY. 25 & DUNN AVENUE RD. LEEDS, A. 0004 </div> <div style="flex: 1;"> HARSCO CORPORATION P.H. (205) 699-2111 FAX: (205) 699-1000 </div> </div>									
<div style="display: flex; justify-content: space-between;"> <div> DET. BY RW </div> <div> DATE 6/14/00 </div> <div> CONT. NO. H-080081 </div> </div>									
<div style="display: flex; justify-content: space-between;"> <div> CHKD. BY RW </div> <div> DATE 6/14/00 </div> <div> DWG. NO. 2 </div> </div>									



BRIDGE SPAN



PARTIAL PLAN OF THE SOUTH LEAF
REF. SHTS. 4 & 5 OF 7

STATE OF MAINE
DEPARTMENT OF TRANSPORTATION
☐ Approved
☐ Returned for Corrections
AUG 07 2000
☒ Approved as noted
☐ Rejected
William Doukas, P.E.

FOR APPROVAL

APPROVER, PLEASE NOTE
ANY VERIFY NOTES NOT
RESPONDED TO ON RETURNED
PRINTS WILL BE TAKEN AS APPROVED.

- NOTES: 1. ALL ENDS TO BE LOAD BANDED.
2. SEE DRAWING 7 FOR DETAILS AND SECTIONS.
3. MDOT PROJECT NO. BR-7623(00)E
4. STEEL TO BE ASTM A709M GR 345.

123-344

BACKCHARGES FOR FIELD WORK OF ANY KIND
ARE NOT ACCEPTABLE WITHOUT PRIOR WRITTEN
AUTHORIZATION BY IKG/BORDEN.

NOTING TYPE				
NONE				
REV	DATE	APPR	LAYOUT	ERECT
1	5/14/00	*		
2	7/21/00	*		

DESCRIPTION	BY
SUBMIT FOR APPROVAL	RW
REV. & RESUBMITTED FOR APPROVAL	RW

GRATING TYPE	FASTENER TYPE	FINISH
RW-22A (5"x3/4" BEARING BARS W/ 1/2"x3/8" CRIMP BARS) STEEL	WELDED TO STRUCTURE	GALVANIZED ASTM A123

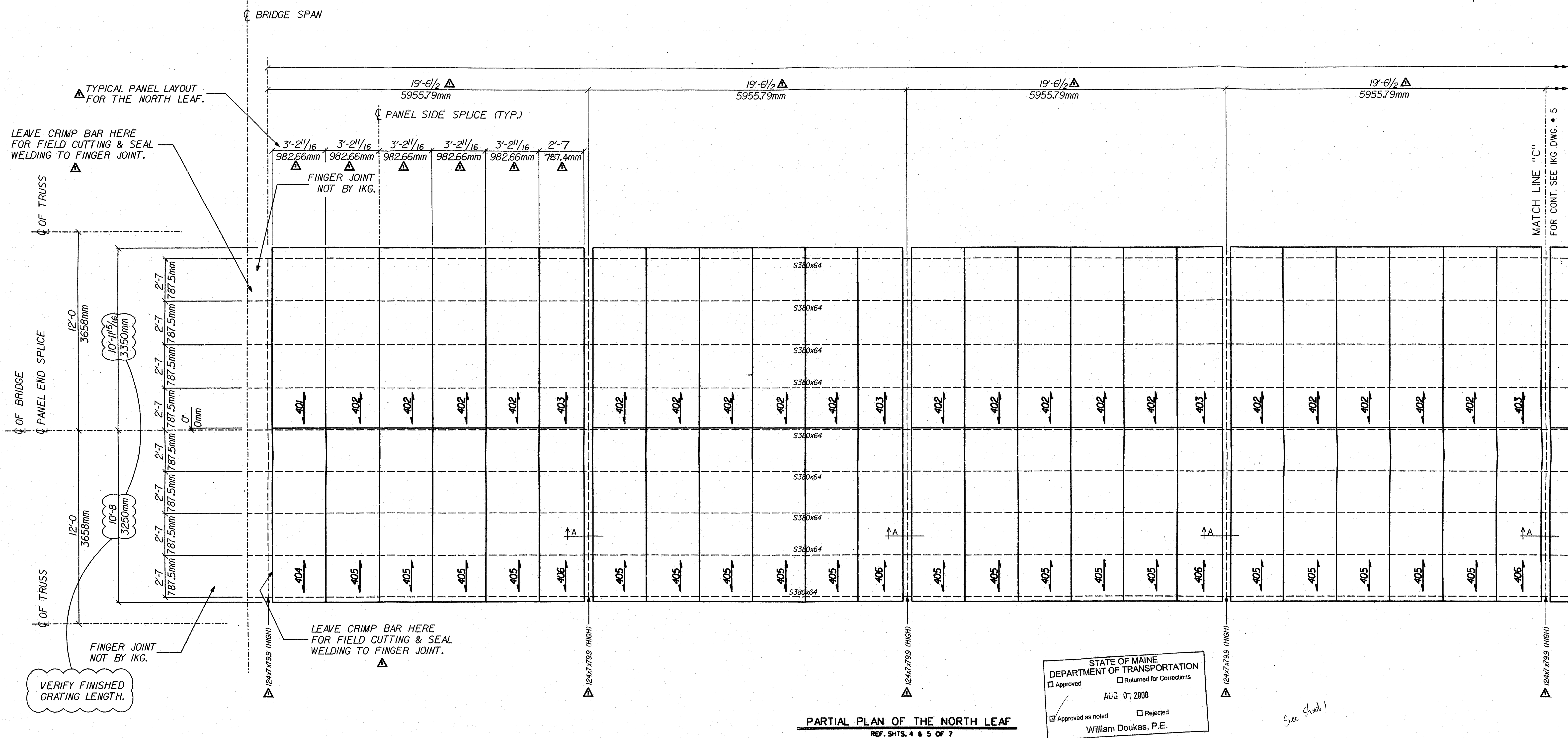
FASTENING METHODS	TOE PLATE	BANDING
FIELD WELDED	FIELD BOLTED	ALL ENDS LONG BANDED

SHOP NOTE	TYPICAL PANEL DETAIL
PIECE MARK LEFT END, ONE SIDE ONLY.	FASTENERS: 4 PER PANEL (UNLESS NOTED) 6 PER PANEL OVER 6'-0"

STRUCTURE	LOCATION	CUSTOMER
INTERNATIONAL BRIDGE OVER THE ST. JOHN RIVER BRIDGE NO. 2399	MADAWASKA, ME	REED & REED, INC.

DET. BY	DATE	CONT. NO.
RW	6/14/00	H-080081

CHKD. BY	DATE	DWG. NO.
ME	6/14/00	3



PARTIAL PLAN OF THE NORTH LEAF
REF. SHTS. 4 & 5 OF 7

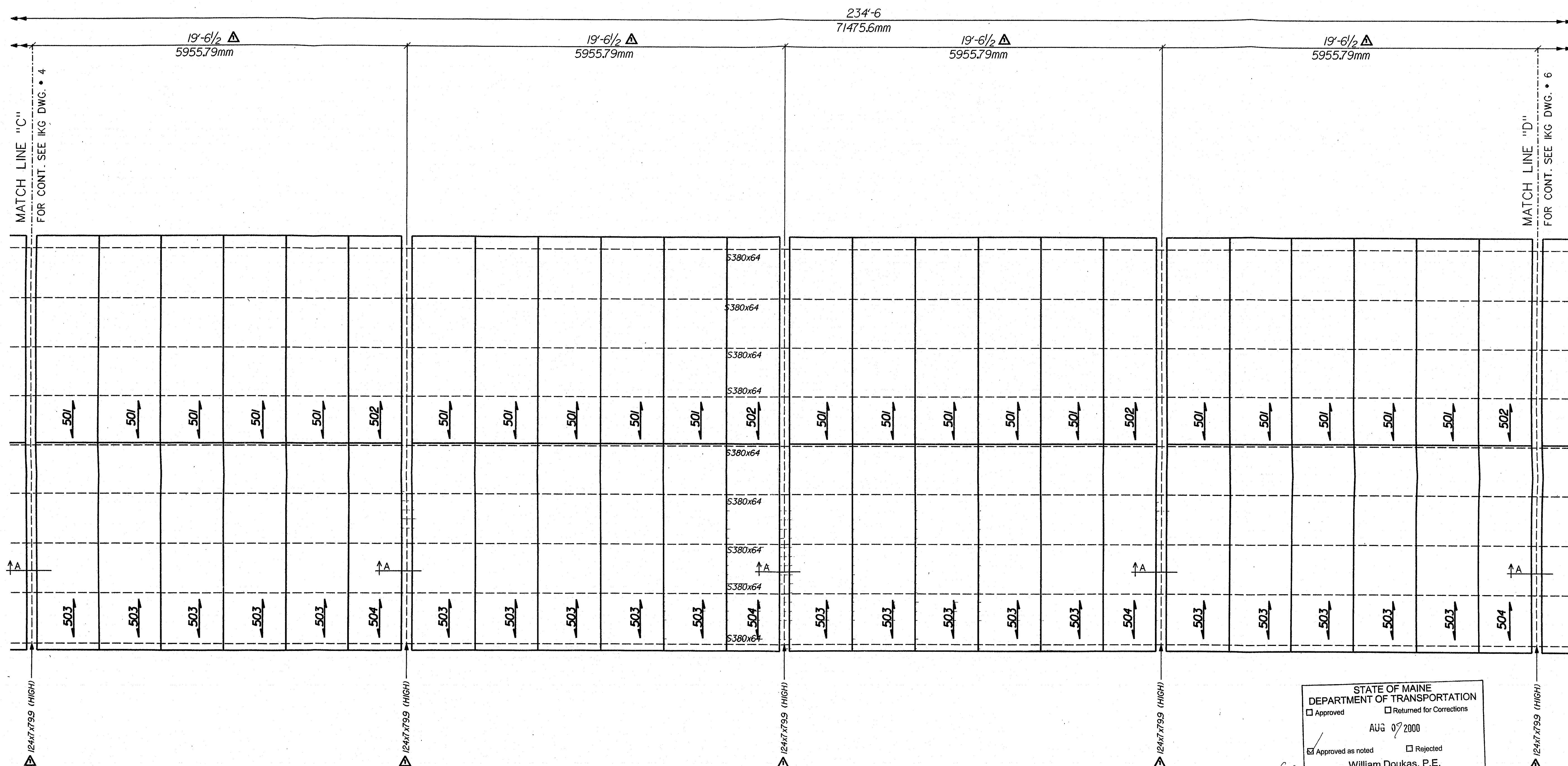
STATE OF MAINE DEPARTMENT OF TRANSPORTATION	
<input type="checkbox"/> Approved	<input type="checkbox"/> Returned for Corrections
AUG 07 2000	
<input checked="" type="checkbox"/> Approved as noted	<input type="checkbox"/> Rejected
William Doukas, P.E.	

FOR APPROVAL

APPROVED FOR THE
ANY VERIFY NOTES NOT
RESPONDED TO ON RETURNED
PRINTS WILL BE TAKEN AS APPROVED.

- NOTES: 1. ALL ENDS TO BE LOAD BANDED.
2. SEE DRAWING 7 FOR DETAILS AND SECTIONS.
3. MDOT PROJECT NO. BR-7623001E
4. STEEL TO BE ASTM A709M GR 345.

NOSING TYPE NONE			
REV	DATE	APPR	LAYOUT
1	6/14/00	*	
2	7/21/00	*	
DESCRIPTION			
SUBMIT FOR APPROVAL			
REV. & RESUBMITTED FOR APPROVAL			
BY			
RW			
GRATING TYPE RW-22A (5"x1/4" BEARING BARS W/ 1/2"x1/8" CRIMP BARS) STEEL			
FASTENER TYPE WELDED TO STRUCTURE			
FINISH: GALVANIZED ASTM A123			
GRT'G PCS			
TREADS			
FASTENERS			
FASTENING METHODS			
FIELD WELDED			
FIELD BOLTED			
TOE PLATE			
BANDING			
SHOP NOTE			
TYPICAL PANEL DETAIL			
SPECIFICATIONS, FABRICATION AND TOLERANCES IN ACCORD WITH NAAMM METAL BAR GRATING Manual unless otherwise noted.			
STRUCTURE INTERNATIONAL BRIDGE OVER THE ST. JOHN RIVER BRIDGE NO. 2399			
LOCATION MADAWASKA, ME			
CUSTOMER REED & REED, INC.			
CUSTOMER P.O. NO. TO FOLLOW			
DETAIL OF GRATING			
BACKCHARGES FOR FIELD WORK OF ANY KIND ARE NOT ACCEPTABLE WITHOUT PRIOR WRITTEN AUTHORIZATION BY IKG/BORDEN.			
HARSICO INDUSTRIES			
A DIVISION OF HARSICO CORPORATION			
P.O. BOX 549 HWY. 25 & DUNNANT RD. LEEDS, N. 3504			
PH: (203) 699-2111 FAX: (203) 699-4200			
DET.	RW	DATE	6/14/00
BY	ME	DATE	6/14/00
CHKD.		DATE	
BY		DATE	
CONT. NO.		H-080081	
DWG. NO.		4	
REV.		A	



PARTIAL PLAN OF THE NORTH LEAF
REF. SHTS. 4 & 5 OF 7

STATE OF MAINE
DEPARTMENT OF TRANSPORTATION
☐ Approved ☐ Returned for Corrections
AUG 07 2000
☒ Approved as noted ☐ Rejected
William Doukas, P.E.

- NOTES: 1. ALL ENDS TO BE LOAD BANDED.
2. SEE DRAWING 7 FOR DETAILS AND SECTIONS.
3. MDOT PROJECT NO. BR-7623(00)E
4. STEEL TO BE ASTM A709M GR 345.

FOR APPROVAL

APPROVER PLEASE NOTE:
ANY VERIFY NOTES NOT
RESPONDED TO ON RETURNED
PRINTS WILL BE TAKEN AS APPROVED.

123-346

REVISIONS					DESCRIPTION		BY
REV	DATE	APPR	LAYOUT	ERECT	SHOP		
1	5/14/00	*				SUBMIT FOR APPROVAL	RW
2	7/21/00	*				REV. & RESUBMITTED FOR APPROVAL	RW

GRATING TYPE		GRATING TYPE	FASTENING METHODS	TOE PLATE	BANDING	SHOP NOTE	TYPICAL PANEL DETAIL
RW-22A (5"x1/4" BEARING)		GRATING TYPE	FIELD WELDED	TOE PLATE	ALL ENDS LOAD BANDED	PIECE MARK LEFT END, ONE SIDE ONLY.	
BARS W/ 1/2"x3/8" CRIMP BARS STEEL		TREADS	FIELD BOLTED				
FASTENER TYPE WELDED TO STRUCTURE		FASTENERS					
FINISH: GALVANIZED ASTM A123							

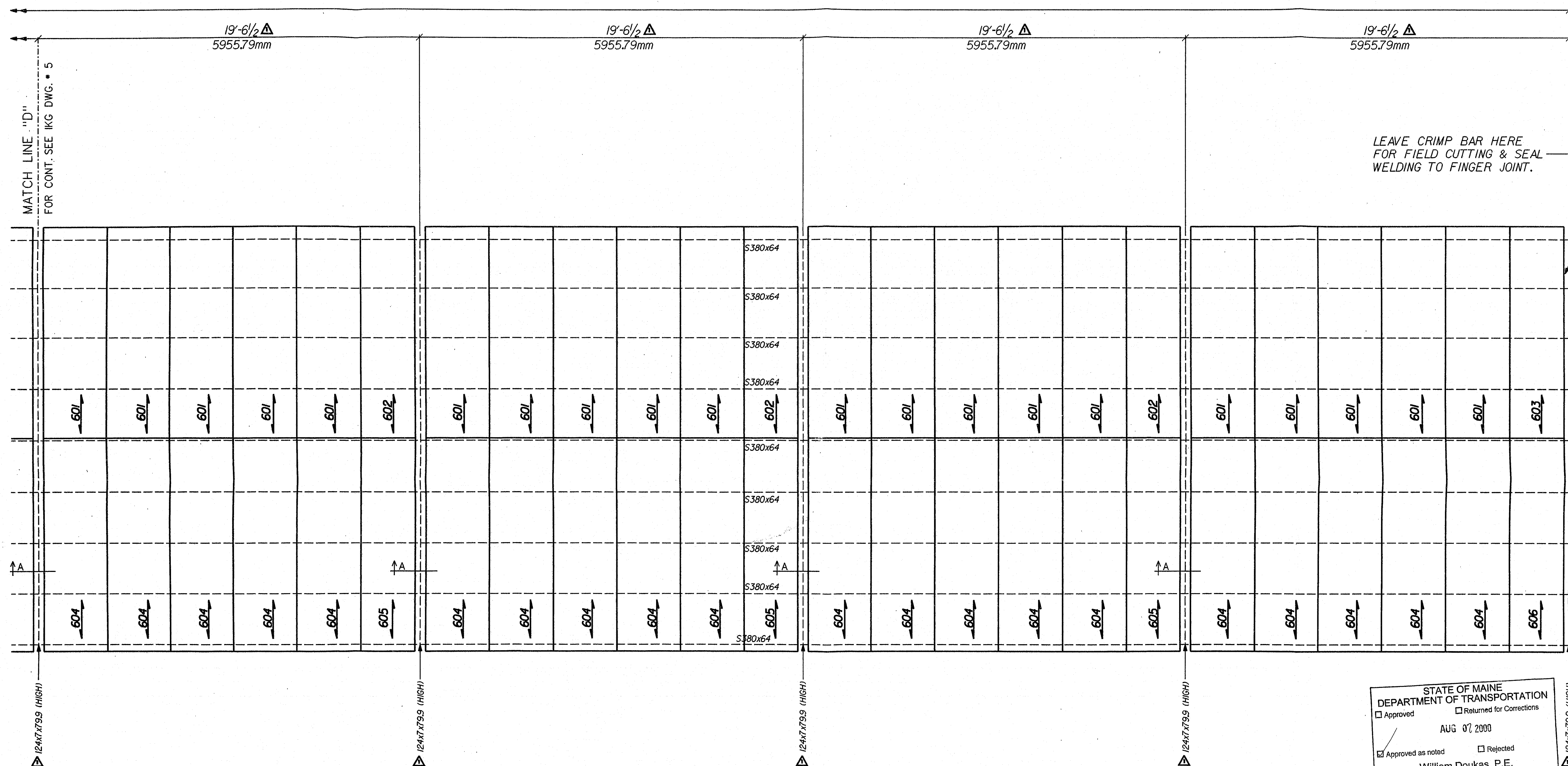
ALL CLEARANCES SHOWN AND INDICATED ON DRAWINGS ARE NOMINAL. CLEARANCES ONLY, THE ACTUAL CUTOUT DIMENSION PERPENDICULAR TO THE SPAN WILL BE MADE TO THE NEXT BEARING BAR PAST THE NOMINAL DIMENSION APPEARING ON THE DRAWING.

BACKCHARGES FOR FIELD WORK OF ANY KIND ARE NOT ACCEPTABLE WITHOUT PRIOR WRITTEN AUTHORIZATION BY IKG/BORDEN.

IG INDUSTRIES
A DIVISION OF HARGRO CORPORATION
P.O. BOX 549
HWY. 25 & DUNN AVENUE RD.
LEDSA, AL 35094
PH: (205) 699-2111
FAX: (205) 699-6300

STRUCTURE: INTERNATIONAL BRIDGE OVER
THE ST. JOHN RIVER BRIDGE NO. 2399
LOCATION: MADAWASKA, ME
CUSTOMER: REED & REED, INC.
CUSTOMER P.O. NO. TO FOLLOW
DETAIL OF GRATING

DET. BY: RW DATE: 5/14/00 CONT. NO.: H-080081
CHKD. BY: ME DATE: 6/14/00 DWG. NO.: 5



PARTIAL PLAN OF THE NORTH LEAF
REF. SHTS. 4 & 5 OF 7

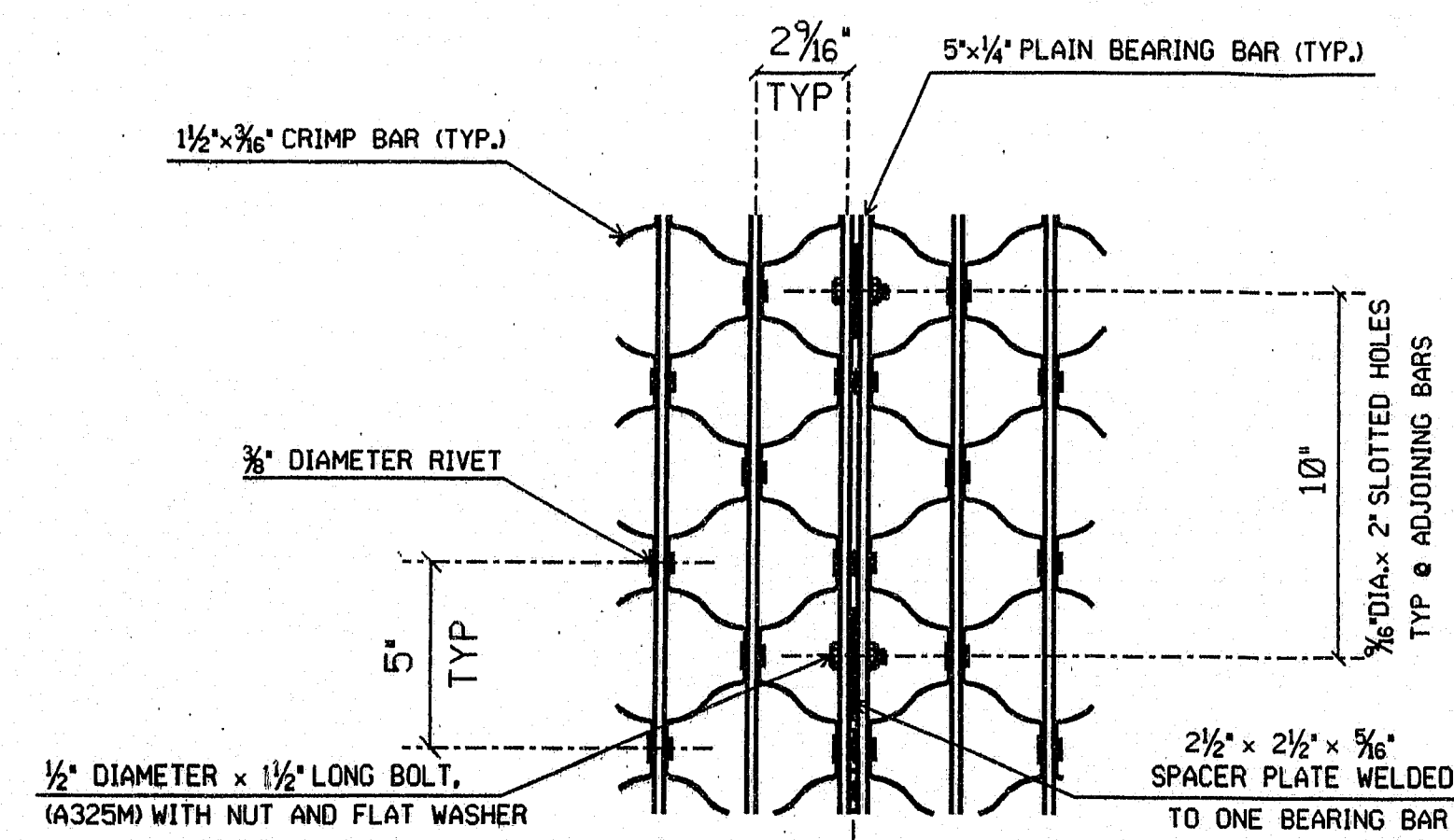
FOR APPROVAL

APPROVER PLEASE NOTE
ANY VERIFY NOTES NOT
RESPONDED TO ON RETURNED
PRINTS WILL BE TAKEN AS APPROVED.

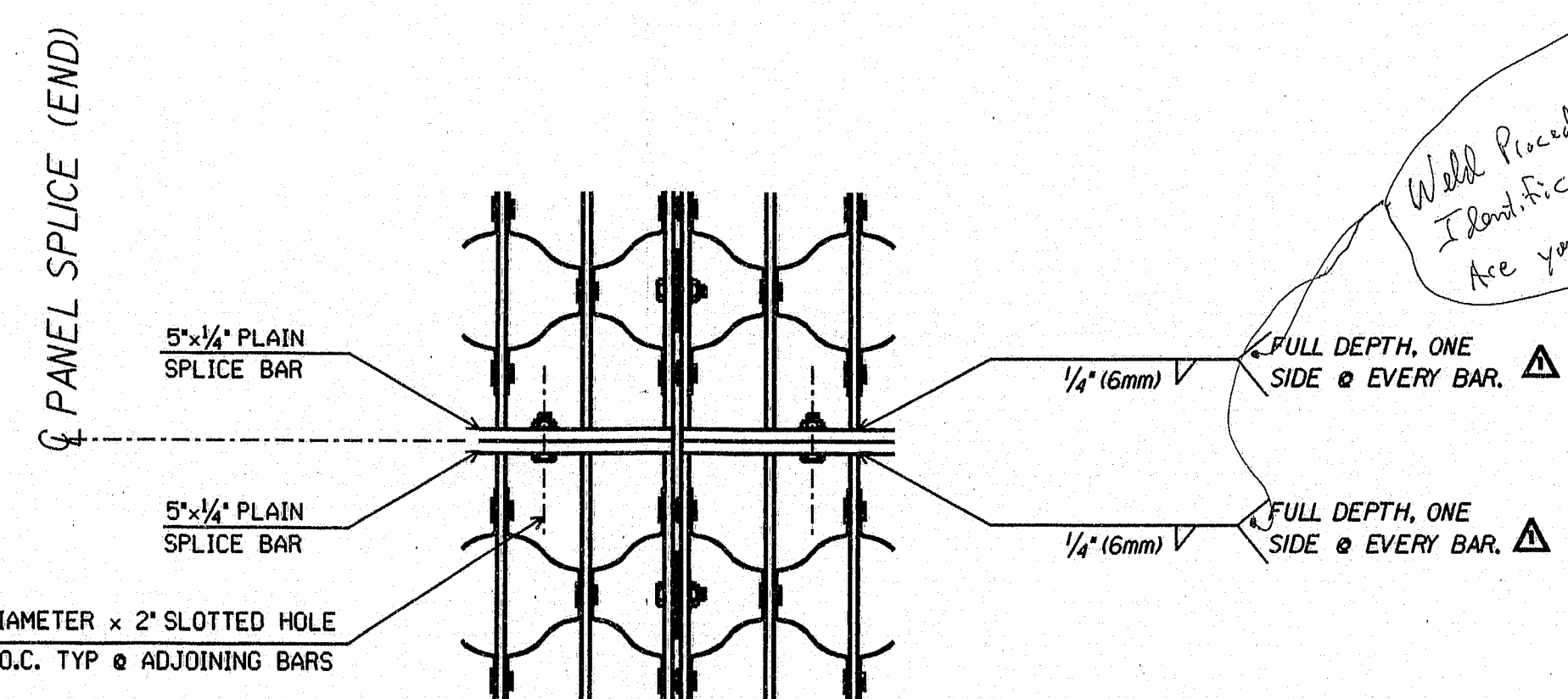
- NOTES: 1. ALL ENDS TO BE LOAD BANDED.
2. SEE DRAWING 7 FOR DETAILS AND SECTIONS.
3. MDOT PROJECT NO. BR-76231001E
4. STEEL TO BE ASTM A709M GR 345.

STATE OF MAINE DEPARTMENT OF TRANSPORTATION	
<input type="checkbox"/> Approved	<input type="checkbox"/> Returned for Corrections
AUG 07 2000	
<input checked="" type="checkbox"/> Approved as noted	<input type="checkbox"/> Rejected
William Doukas, P.E.	

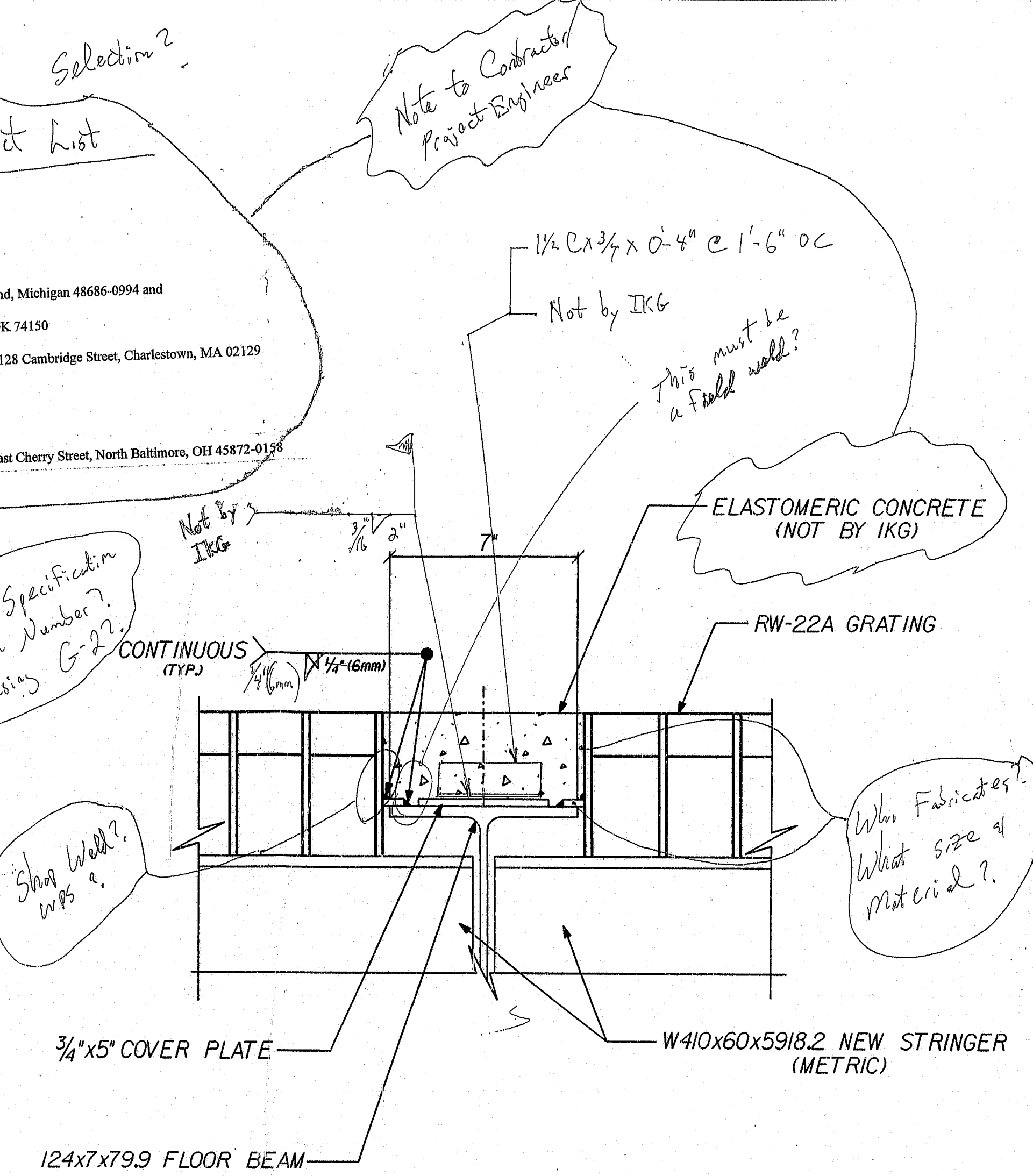
WORKING TYPE NONE		DESCRIPTION SUBMIT FOR APPROVAL REV. & RESUBMITTED FOR APPROVAL		BY RW	
REV	DATE	APPR	LAYOUT	ERECT	SHOP
1	6/14/00	*			
2	7/27/00	*			
GRATING TYPE		RW-22A (5"x1/4" BEARING BARS W/ 1/2"x3/8" CRIMP BARS) STEEL			
FASTENER TYPE		WELDED TO STRUCTURE			
FINISH		GALVANIZED ASTM A123			
CRIMP PCS		TREADS			
FASTENERS					
FASTENING METHODS		FIELD WELDED			
TOE PLATE					
BANDING					
SHOP NOTE		PIECE MARK LEFT END, ONE SIDE ONLY.			
TYPICAL PANEL DETAIL					
SPECIFICATIONS, FABRICATION AND TOLERANCES IN ACCORD WITH NAAMM Metal Bar grating Manual unless otherwise noted.					
ALL CLEARANCES SHOWN AND INDICATED ON DRAWINGS ARE NOMINAL. CLEARANCES ONLY, THE ACTUAL OUTLET DIMENSION PERPENDICULAR TO THE SPAN WILL BE MADE TO THE NEXT BEARING BAR PAST THE NOMINAL DIMENSION APPEARING ON THE DRAWING.					
STRUCTURE		INTERNATIONAL BRIDGE OVER THE ST. JOHN RIVER			
LOCATION		MADAWASKA, ME			
CUSTOMER		REED & REED, INC.			
CUSTOMER P.O. NO.		TO FOLLOW			
DETAIL OF GRATING					
BACKCHARGES FOR FIELD WORK OF ANY KIND ARE NOT ACCEPTABLE WITHOUT PRIOR WRITTEN AUTHORIZATION BY IKG/BORDEN.					
IBB INDUSTRIES					
A DIVISION OF HARSCO CORPORATION					
P.O. BOX 549 HWY. 25 & DUNN AVENUE RD. LEEDS, A. 3504					
DATE		6/14/00			
CONTRACT NO.		H-080081			
BY		RW			
CHKD. BY		ME			
DATE		6/14/00			
DWG. NO.		6			



SIDE SPLICE DETAIL



END SPLICE DETAIL



SECTION-A

STATE OF MAINE
DEPARTMENT OF TRANSPORTATION
☐ Approved ☐ Returned for Corrections
AUG 07 2000
☒ Approved as noted ☐ Rejected
William Doukas, P.E.

FOR APPROVAL

APPROVER PLEASE NOTE
ANY VERIFY NOTES NOT
RESPONDED TO ON RETURNED
PRINTS WILL BE TAKEN AS APPROVED.

NOTES: 1. ALL ENDS TO BE LOAD BANDED.
2. MDOT PROJECT NO. BR-7623001E
3. STEEL TO BE ASTM A709M GR 345.

123-348

REVISIONS REV. DATE APPR. LAYOUT ERECT SHOP 6/15/00 * 7/21/00 *				DESCRIPTION SUBMIT FOR APPROVAL REV. & SUBMITTED FOR APPROVAL		BY RW	GRATING TYPE RW-22A (5"x1/4" BEARING BARS W/ 1/2"x3/16" CRIMP BARS) STEEL FASTENER TYPE WELDED TO STRUCTURE FINISH: GALVANIZED ASTM A123	GRT'G PCS TREADS FASTENERS	FASTENING METHODS FIELD WELDED FIELD BOLTED TOE PLATE BANDING SHOP NOTE TYPICAL PANEL DETAIL	STRUCTURE INTERNATIONAL BRIDGE OVER THE ST. JOHN RIVER BRIDGE NO. 2399 LOCATION MADAWASKA, ME CUSTOMER REED & REED, INC. CUSTOMER P.O. NO. 10 FOLLOW DETAIL OF GRATING DETAILS	BACKCHARGES FOR FIELD WORK OF ANY KIND ARE NOT ACCEPTABLE WITHOUT PRIOR WRITTEN AUTHORIZATION BY IKG/BORDEN.	IKG INDUSTRIES A DIVISION OF HARSCO CORPORATION P.O. BOX 549 HWY. 25 & DUNHAM RD. LEEDS, N. 3004 DET. BY RW DATE 6/15/00 CONT. NO. H-080081 CHKD. BY ME DATE 6/15/00 DWG. NO. 7
--------------------------------------------------------------------------	--	--	--	---------------------------------------------------------------------	--	----------	---------------------------------------------------------------------------------------------------------------------------------------------------	----------------------------------	----------------------------------------------------------------------------------------------------------------	-----------------------------------------------------------------------------------------------------------------------------------------------------------------------------------------------	--------------------------------------------------------------------------------------------------------------------	---------------------------------------------------------------------------------------------------------------------------------------------------------------------------------------------------